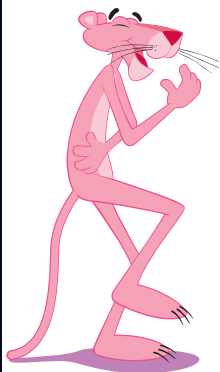
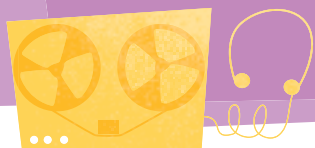


Make neat, detailed records of all the clues you find, then put them into a logical order and analyse them to see if you can spot any patterns or links.

GATHERING CLUES



CONDUCTING THE INVESTIGATION



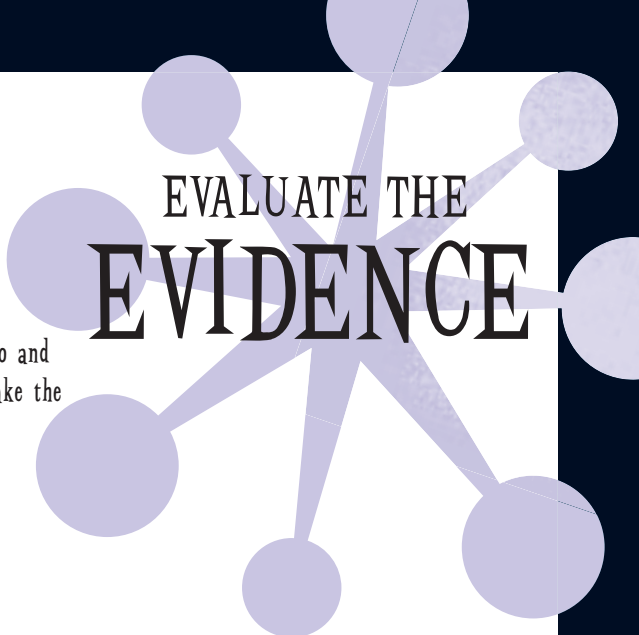
Do your research. Think of where you'll need to look and who you'll need to interview. Then plan ahead. What questions will you need to ask to get a clearer picture?





Detectives need excellent judgement.
Assess everything you see, hear and do and
use your common sense to help you make the
right decisions and crack the case.

EVALUATE THE EVIDENCE



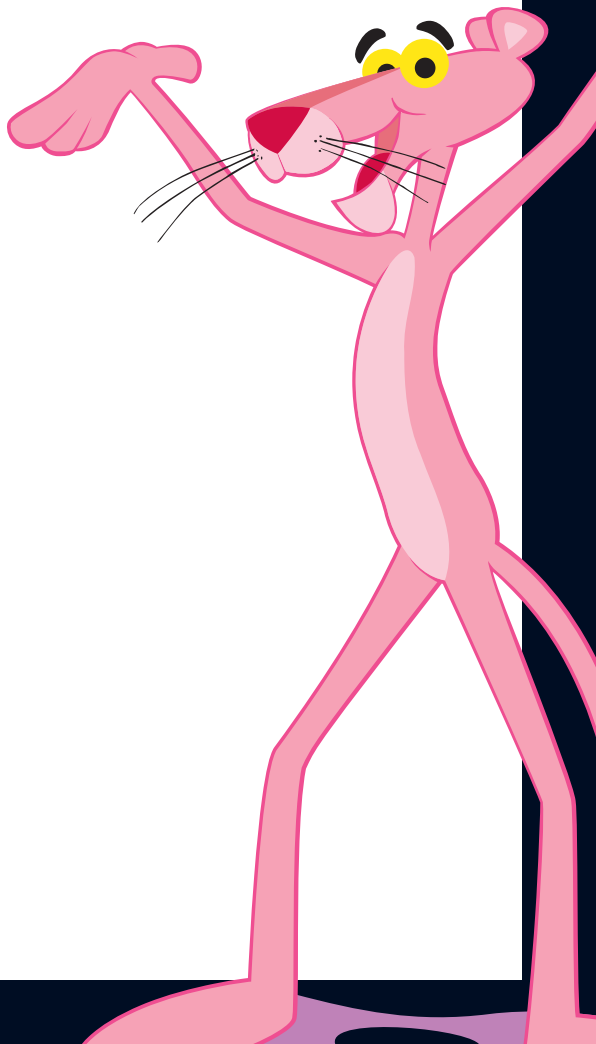
DRAW CONCLUSIONS

Still missing some vital pieces of the jigsaw? Looking at all the facts you already have, use your imagination to fill in the blanks. Then look for evidence that will prove if your theory is right or not!



PRESENT YOUR CASE

Chief Inspector Dreyfus wants logical deductions based on strong evidence. Use precise language to convince him of your theory!



DETECTIVE NOTES

